

# THE PALAMOS COLLECTION

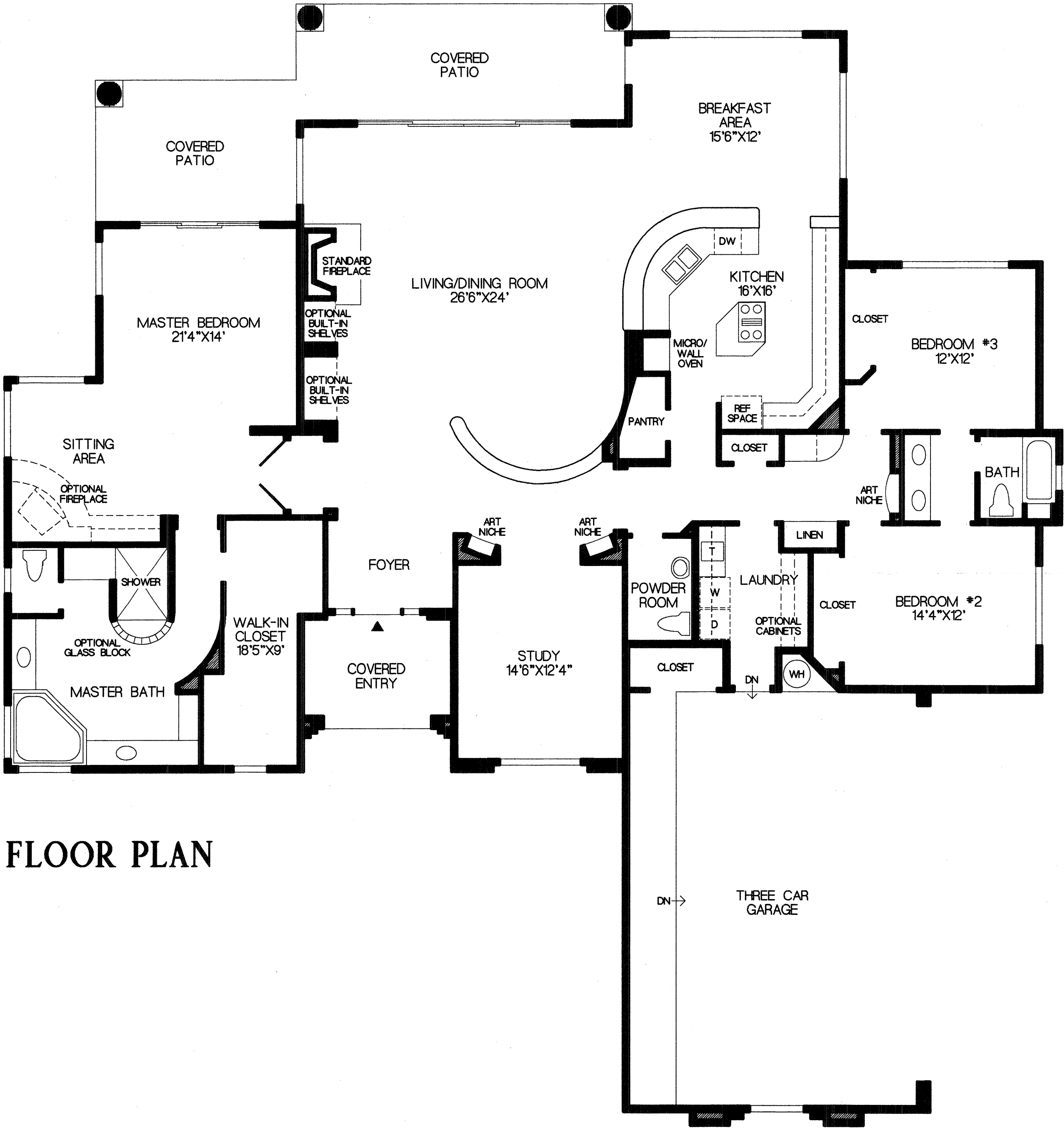
Foyer opens to living and dining room with standard fireplace.

Expansive kitchen with island countertop, large pantry and sunny breakfast area.

Private study conveniently located off the foyer.

Master bedroom suite with sitting area offers a private bath with Roman tub and large walk-in closet.

3 bedrooms, 2½ baths.



FLOOR PLAN

Note: This brochure is for illustration purposes. All dimensions are approximate and designs are subject to field variations. Some windows and floor plans may vary with elevations. Some features may vary from community to community. Please consult sales manager for details. (SCDD/3884) 03/0 © 1998 TOLL BROTHERS, INC.

The floorplans and elevations of Geoffrey H. Edmunds & Associates homes are copyrighted. We have enforced and will continue to enforce our federal copyrights to protect the investment of our homebuyers.

This insert was produced using recycled products.